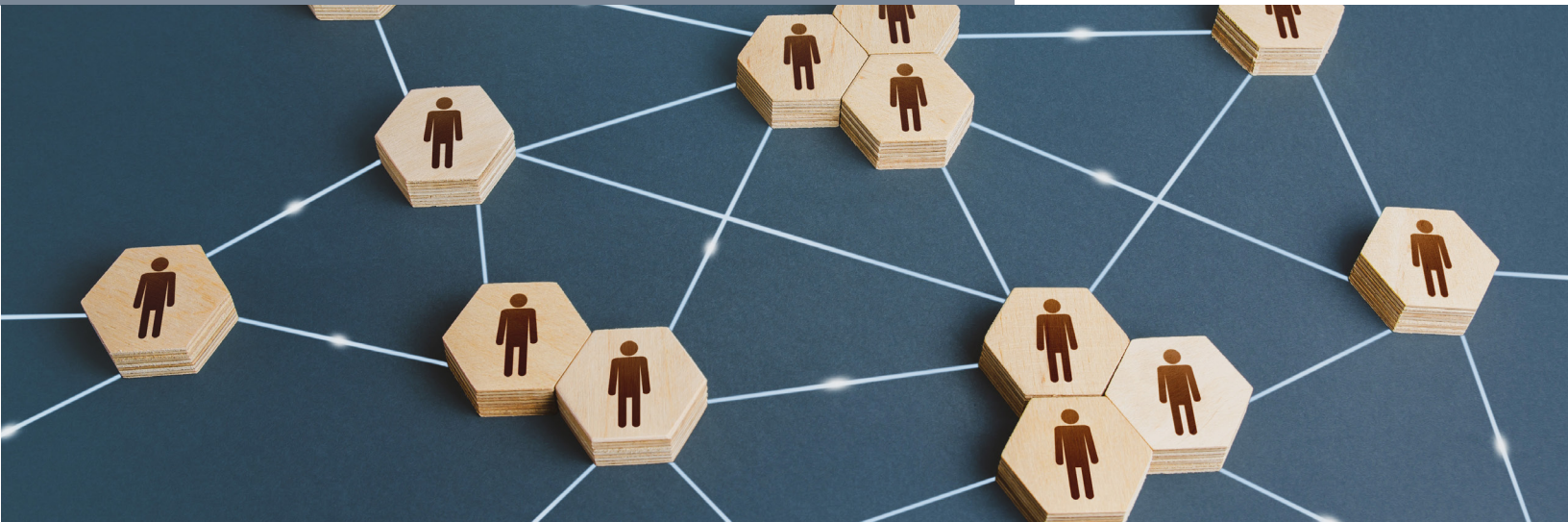


Tintri reduces administrative man-hours managing more than 1,000 virtual machines with small numbers of IT staff at AMANO Business Solutions



AMANO

AMANO Business Solutions Corporation

A provider of cloud and outsourcing services centered on Time & Attendance, Payroll, and Human Resources to help customers resolve labor management issues.



<https://www.i-abs.co.jp>



Time & Attendance, Payroll and HR Management Cloud Services



User-configurable Time & Attendance Cloud Service



VMstore

HR cloud services are contributing to our client's operational efficiency in labor management

AMANO Business Solutions Corporation ("ABS") offers CYBER XEED, a cloud service that allows centralized management of Time & Attendance, Payroll, and Human resource information, and CLOUZA, a user-configurable, in other words, no experts required, Time & Attendance cloud service for small businesses.

Both of these solutions have earned a high degree of trust from users by helping them to improve business efficiency and productivity through high-quality services that meet their needs.

In Japan's changing business environment, where the demand for "work style reform" is ever increasing amid a chronic decline in population and compliance reinforcement, the development and strengthening of labor management has become an important management issue, and as such, the adoption of CYBER XEED and CLOUZA is accelerating.

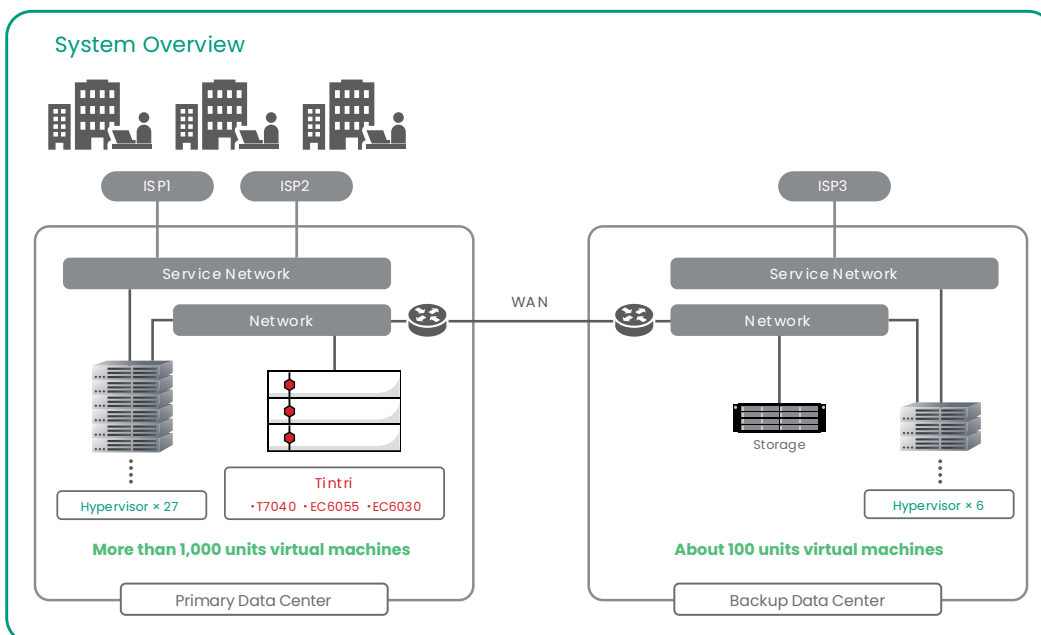
Deciding factors in selecting Tintri: "I/O analysis on a per-virtual machine basis. Automatic QoS, simple configuration, and NFS as the connection method to the hypervisor."

In 2015, ABS reselected storage when upgrading its virtual infrastructure that supports their cloud services. At that time, they compared Tintri with other storage solutions.

While the selection criterion for storage was to improve performance, in order to realize easy operation, the following four points were also considered as critical.

- (1) I/O analysis on a per-virtual machine basis
- (2) automatic QoS
- (3) simple configuration
- (4) flexible NFS connection with the hypervisor

Since Tintri met and exceeded all criteria, it was selected as the winning vendor.



Challenges

Reduction of operational man-hours

Provide stable cloud infrastructure

Provide services from the customer's point of view

Solution

Tintri T7040/EC6055/EC6030

Results

Smooth handover at the time of change of personnel

Reduction of management man-hours by automatic QoS

Leverage snapshots to enhance data protection

Stable performance under heavy workloads

Amid extremely busy conditions due to extensive personnel changes, the stability of Tintri allowed a smooth transition

Said Mr. Yoshiaki Narisawa, Manager of the Cloud Service Operations at ABS. "When I assumed this role in 2021, my first priority was to grasp the network configuration and I had no time for storage. But despite this situation, there were no trouble incidents and I remember being extremely relieved. As my predecessor commented, the automatic QoS works properly and reliably, and when I actually analyzed the storage load status and confirmed that it was operating without any problems even at peak loads, I was once again amazed at Tintri's stability".

"Human resources and labor management operations typically involve periods of concentrated customer access, such as during the hours when people arrive and leave work, and around the end and beginning of each month when attendance records are finalized. So it is essential to keep cloud service performance stable even during such peak periods".

Mr. Takahiro Abe, a member of the same department, said, "I used to be in charge of installing Time & Attendance systems in our clients' system environments where I was responsible for on-site customer support performing installation work. Although I have been in this position for less than a year, I am grateful for how quickly I was able to catch up, thanks to Tintri's simple configuration. Also, the individual VMs (Virtual Machines) respond quickly as if they were stand-alone physical servers."

Mr. Narisawa asserts the system is operating stably, with virtually no inquiries, complaints or otherwise, from customers. He added "My impression as an operator, is that Tintri is a hassle-free product providing stable performance, which I think is one of Tintri's superior features".

Enhanced ransomware protection and backup using the snapshot function

Mr. Narisawa stated "AMANO Group has long led the industry as a pioneer in Time & Attendance management systems. We believe that the key to further improving customer satisfaction is to eliminate downtime in infrastructure operations. For this reason, we have a redundant configuration with two Internet carriers and a backup data center. We have also strengthened security by installing endpoint ransomware protection."

"In addition to strengthening security against ransomware,

we have also adopted Tintri snapshots to enhance data protection. Tintri snapshots are protected in an isolated area separate from the data domain ensuring reliable and immediate recovery in case of an emergency," Mr. Abe noted.

Increase efficiency by eliminating dependence on specific employees and automating operations

IT departments are required to operate systems with a small number of employees, and this trend is expected to become even stronger as the workforce continues to decline.

Mr. Narisawa stated, "Originally, the management and operation of server virtualization, storage, and networks were organizationally segregated. However, these are now all handled by the Cloud Services Operations Department.

The adoption of Tintri has simplified operations, allowing us to operate even with limited work resources. In an age of high employee turnover, it is becoming increasingly difficult to expect long term employment and rely on their veteran skills. I believe that it is imperative to eliminate the dependency on specific employees and to reduce the overall man-hours required for day-to-day operations.

For this reason, we are striving towards automation of infrastructure management and the adoption of Infrastructure as Code (IaC)."

To that end, with a view to automating virtual infrastructure, ABS plans to further utilize Tintri by integrating third-party tools with Tintri's API.

Mr. Abe concluded, "Taking advantage of my experience in actually assisting customers directly, our operations are based on customer's perspective. In addition to enhancing security and eliminating downtime, we will continue to automate operations to further improve our services and provide a stable infrastructure.

Experience Carefree Virtual Data Management. Experience Tintri. For more information on how Tintri VMstore can turbocharge your business success, visit tintri.com/vmstore.

The information in this publication is based on interviews conducted in August 2023.

Interviewees



Infrastructure Operations
Division, AMANO Business
Solutions Corporation

Yoshiaki Narisawa, Manager,
Cloud Services Operations
Department



Infrastructure Operations
Division, AMANO Business
Solutions Corporation

Takahiro Abe, Cloud Services
Operations Department



Tintri